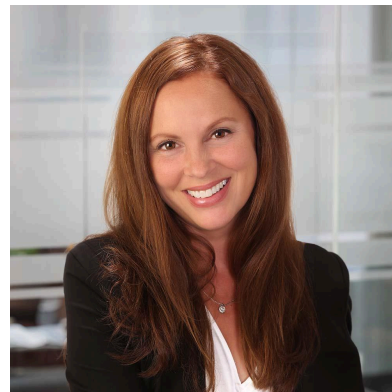


# Stephanie Petty, Esq.

## Principal

[spetty@bdboston.com](mailto:spetty@bdboston.com)

617-251-4278



## Practice Areas

- [Real Estate & Land Use Law](#)
- General Business
- [Estate Planning Taxation & Probate](#)

Stephanie Petty dedicates keen personal attention as well as expertise to each Residential Real Estate Transaction she manages and each case she handles in Probate Court. She is focused on the practical as well as legal aspects of each acquisition and the stated and unexpressed priorities for each client engagement. A devoted parent and runner, Stephanie serves her Lynnfield community as a boys soccer coach and Housing Commissioner, and through charitable organizations including Rotary International.

## Work with Clients

Ms. Petty represents buyers, lenders, sellers and developers. She has extensive experience in residential condominium development and financing including business entity (LLC, Partnerships, et al) selection in connection with real estate development and residential purchase and sales contracts and conveyancing. She also has significant experience in Estate Planning (Wills & Trusts) and Probate Administration.

## Professional Activities

Ms. Petty is a Member of the Massachusetts Bar and is licensed to practice in the United States District Court for the District of Massachusetts, the Massachusetts Bar Association and the Real Estate Bar Association.

## Personal and Community Activities

Ms. Petty is presently a Housing Commissioner Board Member in Lynnfield, MA. She is also a Board Member for Lynnfield Youth Soccer (as well as a former Boys' soccer coach), an active member of Lynnfield Rotary and a member of the Lynnfield-Wakefield Chamber of Commerce. In her spare time, she trains and runs marathons and half marathons for charitable causes. She is originally from Martha's Vineyard and currently lives in Lynnfield with her three boys.

## Publications/Presentations

Ms. Petty has made presentations to real estate brokers and professionals, as well as presented at first time home buyer seminars.

**Education**

Ms. Petty received her Bachelor's Degree in Economics and Finance from Northeastern University in 2000 and was awarded the Academic Excellence Award for Economics. She earned her Juris Doctor degree from Suffolk University Law School in Boston in 2003.